



Electric Countertop Grill

*Accurate and perfect control of heating output.
Compact control box for a larger cooking area.
Use with a ventilation hood.*

| Good For

Barbeque Stalls
Startup Shop
Chain Stores
Social Restaurant
Japanese Cuisine
Roast Fish

| Features

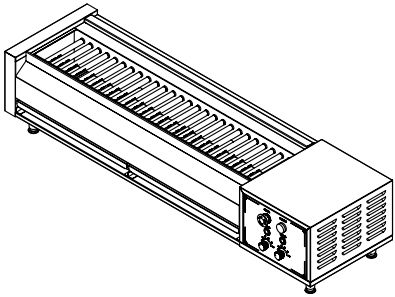
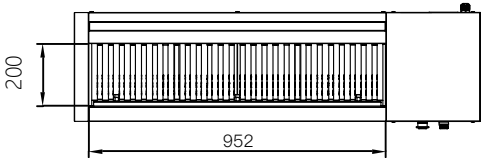
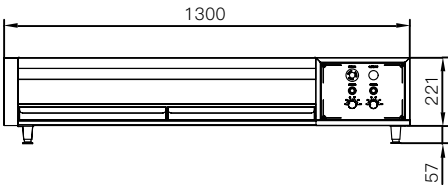
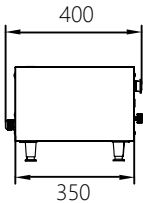
- ⊙ Full stainless steel structure.
- ⊙ Compact control box frees up more space for grilling.
- ⊙ Heating power output controlled by SCR regulator.
- ⊙ Energy-saving twin independent heating systems during non-peak service period.
- ⊙ Two independent oil pans.
- ⊙ 2" stainless steel adjustable legs.



ELECTRIC GRILL

PYC-02

| Specifications



Model	PYC-02
Voltage & Frequency	380-415V 3N~, 50/60Hz
Power	0~10.4kW
Dimension (mm)	1300 x 350 x 277
IP Rating	IPX3