



Plate Lowerator Countersunk

“Anvil’s Plate Lowerator will keep your plates warm at the desired temperature”

Model: PWK1001

APPLICATION

- Ideal for restaurants, and lodges

CONSTRUCTION

- Double skin construction
- Adjustable shelf position for various plate sizes
- Approximately 40 plate capacity

HEATING

- Temperature control via thermostat

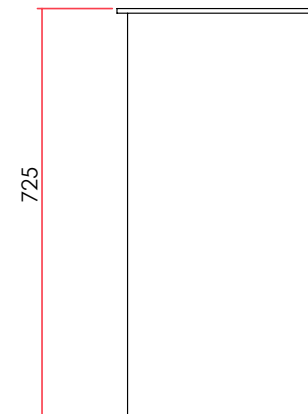
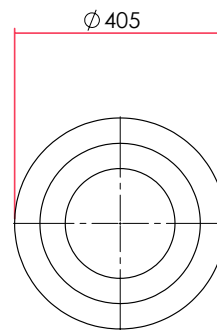
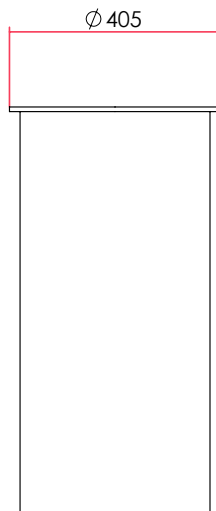


 **ANVIL**

AXIS



ALL ANVIL EQUIPMENT COMES WITH A ONE
YEAR WARRANTY ON COMPONENTS AND
DEFECTIVE WORKMANSHIP.
www.anvilworld.com



DESCRIPTION

MODEL
POWER RATING (230V/50Hz)
DIMENSIONS (mm) (W x D x H)
BOX DIMNS (mm) (W x D x H)
PACKED WEIGHT (kg)
COMPLIES WITH SPEC

- Unit available in 120V/60Hz configuration

PLATE WARMER

PWK1001
0.4kW
405Ø x 725
470 x 470 x 867
25
SABS IEC 60335

Model: PWK1001

NOTE: When viewing the appliance from the front in it's usual operating position, the width (W) of the product is the total distance from left to right; the depth (D) of the product is the total distance from the front to the back; the height (H) is the total distance from the bottom of the product to the top.



ANVIL

AXIS

Note: Output performance figures quoted are dependant on various factors

Anvil reserves the right, without notice, to make changes and revisions to product specifications, materials and design, which in our opinion, will provide better performance, durability and efficiency.