

RD-CB SERIES

Table top Gas Charbroiler

PARAMETERS SHEET

MODEL#: RD-CB-SERIES



RD-CB-24

Specifications

- Full Stainless steel body
- Plug-in High-power Stainless Steel burners
- Gas Valves are certificated by CSA
- Manual ignition with Pilot switch for each burner
- With Low Back Slash and exhaust hood

Choose GAS TYPE When Placing Order

- LPG
Liquefied Propane Gas
- Natural Gas

Models in RD-CB series

- RD-CB-24 Gas Charbroiler
- RD-CB-36 Gas Charbroiler
- RD-CB-48 Gas Charbroiler

Accessories

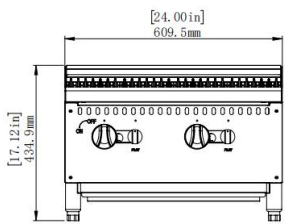
Standard:

- Adjustable bullet leg
- Convert kit of LP and Natural Gas

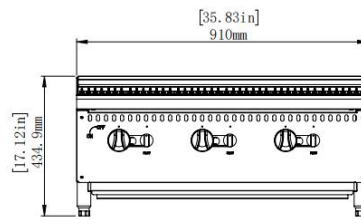
Option:

- Lava rock
- Lava rock holding kit

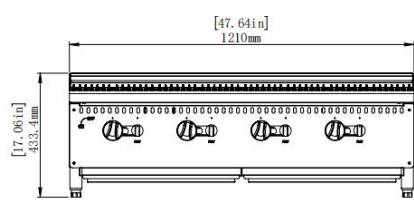
PRODUCT DIMENSION CHART



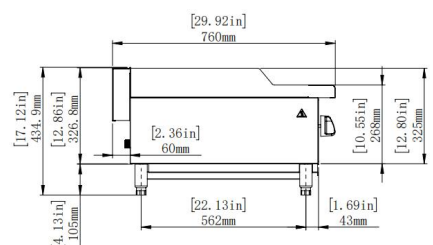
RD-CB-24



RD-CB-36



RD-CB-48



Side View

Key Parameters

Model	Product Dimension	Heat Power	Heating Burner	Gas Consumption:	Gas inlet Connection	N.W	G.W	Packing dimension
RD-CB-24	24"x29.93"x17.12" 609.5x760x435mm	60,000 BTU/H	2	NG:2.104m3/h LPG:0.906m3/h	3/4" BSP Male	56kg	72kg	740*915*530mm
RD-CB-36	35.83"x29.93"x17.12" 910x760x435mm	90,000 BTU/H	3	NG:2.367m3/h LPG:1.02m3/h	3/4" BSP Male	79kg	96kg	1040*920*530mm
RD-CB-48	47.64"x29.92"x17.12" 1210x760x435mm	120,000 BTU/H	4	NG:3.156m3/h LPG:1.36m3/h	3/4" BSP Male	97kg	125kg	1340*920*520mm

PING EDGE SDN BHD

ADD: LOT 3210, JALAN BALAKONG, KAWASAN PERINDUSTRIAN KAMPUNG BARU BALAKONG
43300 SERI KEMBANGAN, SELANGOR, MALAYSIA