

Technical Data	D1M/HR
Electrical loading	3.5 kW(15 A)
Power supply	230V/50Hz/1 Phase
Tank heater	2 kW
Booster heater	2 x 1 kW
Machine capacity	60 racks
Cycle time	Two Cycle Selection
Door opening height	420 mm
Rinse usage	2.6 L/rack
Auto fill	YES
Auto door sensor	YES
Net weight	128 kg
Dimension	W697 x D683xH1620



1st Pre-heat in External Tank



2nd Pre-heat in Wash Tank



Easy maintenance as fully utilize of mechanical control parts



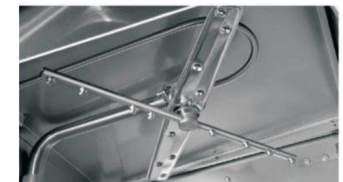
Eye level easy access

DOOR TYPE DISH WASHER WITH HEAT RECOVERY GT-D1M/HR

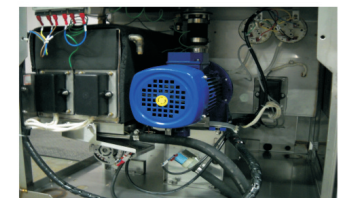
Characteristics		
Energy saving design	→	Saves at least 30%
Automatic operating system	→	Simple to use
High efficient performance	→	Reduce labor
All stainless steel construction	→	Durable and reduce down time
Powerful washing & sanitizing	→	Improve hygiene image



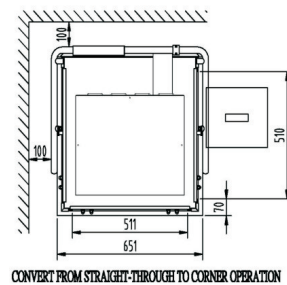
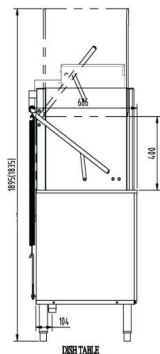
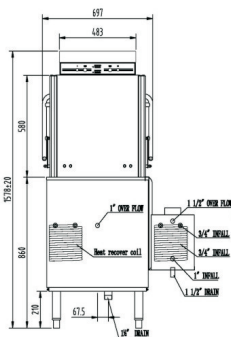
Wash tank is 99% stainless steel construction including drain pipe, enhance machine life



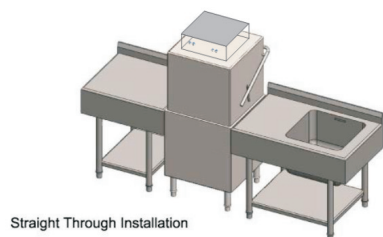
Debossed anti-clog nozzles provide powerful washing performance.



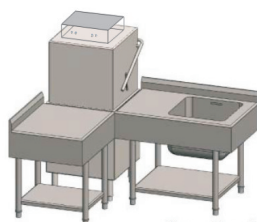
Italian rinse pump, Italian solenoid valve are used for this machine. Energy saving booster saves 30% heat loss & energy consumption. 1.2 HP wash motor provides guaranteed washing results.



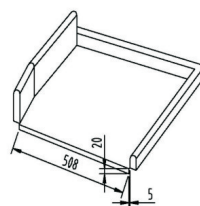
CONVERT FROM STRAIGHT-THROUGH TO CORNER OPERATION



Straight Through Installation



Corner Type Installation



Explain:
DISH TABLE HEIGHT 820-860mm