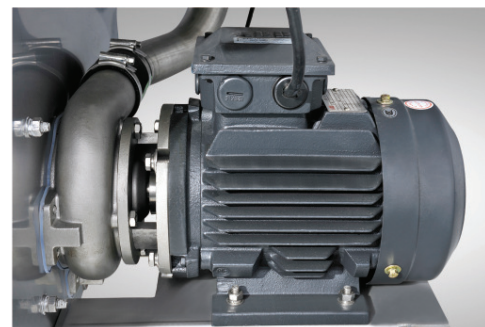


Single Tank Conveyor With Heat Recovery System GT-CR1/HR



2 HP ABB wash motor & stainless steel impeller guarantee maximum durability & washing results.



Debossed anti-clog nozzles provides powerful washing performance



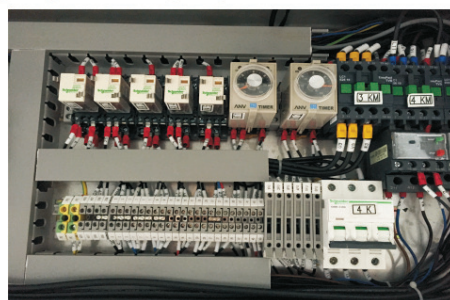
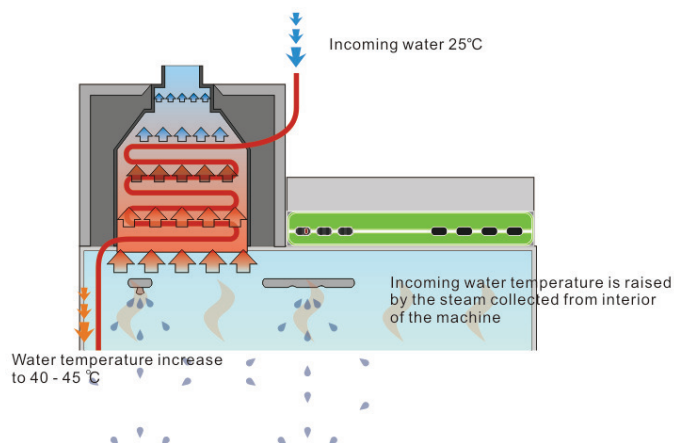
ASCO solenoid valve provides reliability and durability.

Control panel indicates the temperature of water inlet, heat recovery system, washing and rinsing process which can monitor the temperature of energy saving and sterilization



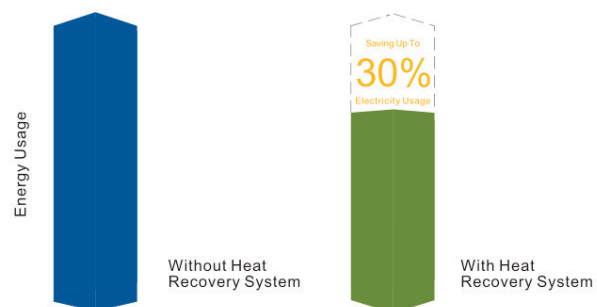
Heavy duty gear box conveyor system with jam and overload protection

Heat Recovery System



Mechanical control provides convenient services & can be sourced easily anywhere.

Energy Saving by Heat Recovery System



The above information is for reference purposes only. Actual data will depend *on the site environmental circumstance.



Booster Heater underneath provide easy access for service when required

Technical Data

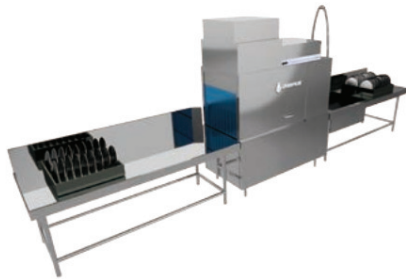
Size	1150 (W) x 695 (D) x 1979 (H) mm
Door Opening Height	1950 mm
Net Weight	240 kg
Rack Size	500 (W) x 500 (D) mm
Machine Capacity	230 Racks / Hour
Loading Height	450 mm
Tank Capacity	80 L
Water Consumption	2 Ltr / Rack
Suggest Water Pressure	15-25 PSI
Wash Tank Heater	9 kW
Wash Pump Power	1.5 kW (2 HP)
Conveyor Motor	0.5 kW (0.75 HP)
Built-in Booster Heater	18 kW (25 amp) or 27 kW (38 amp)
Electrical Loading	22 kW (31 amp) or 31 kW (44 amp)
Power Supply	415 V / 50 Hz / 3 Phase

GT-CR1/HR

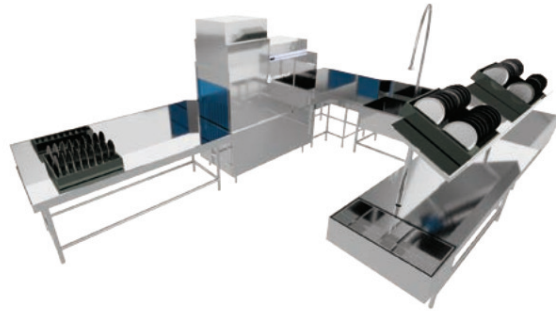
Single Tank Conveyor Type Dishwasher (Heat Recovery Type)

Perspective

Operation Diagram

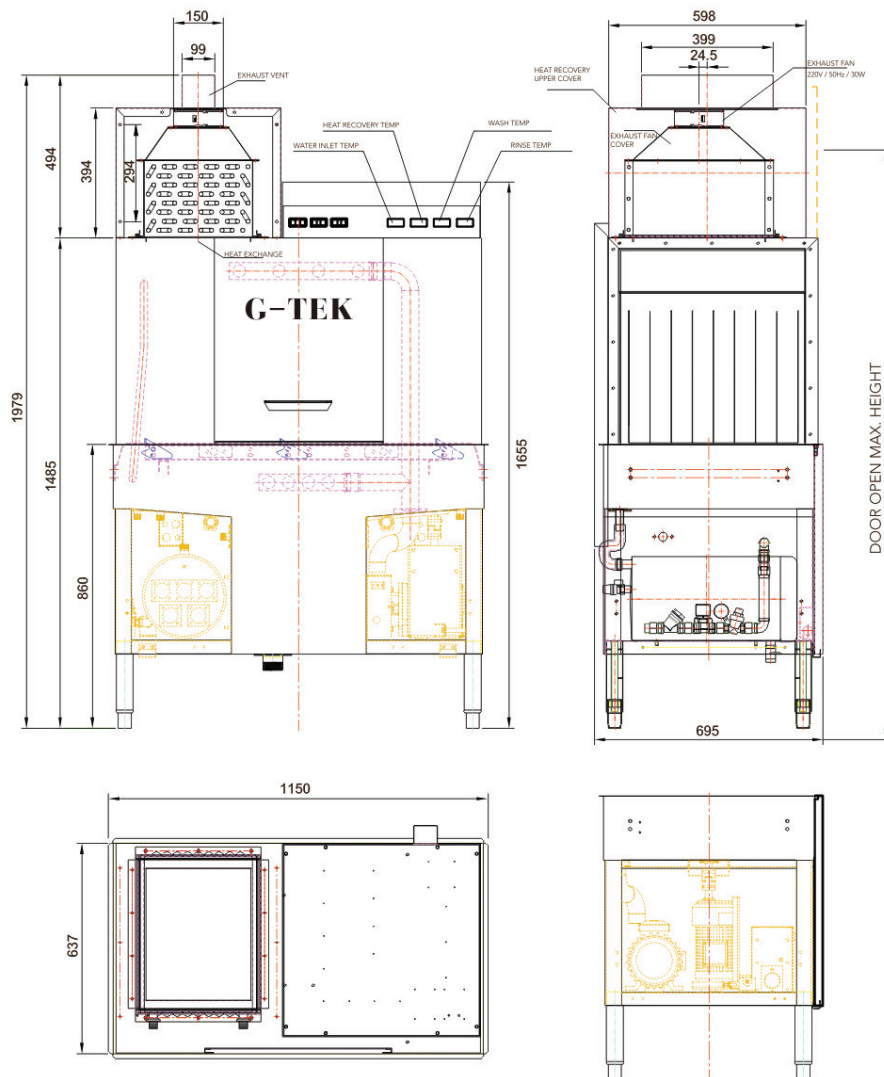


Standard Type Operation



High Volume Operation

Perspective



Remarks:

1. Isolator of 415V/3 Phase with overload protector must be used.
2. Electrical cable: 3 phase, 5 wires(16 m2)
3. Drain: 2"
4. Minimum incoming water pressure: 1 Bar or 14 PSI, water inlet: ¾"



BREAKTHROUGH OF ENERGY SAVING DESIGN

Achieve over 30% electricity consumption saving compare with traditional models and achieve the hygiene standard at the same time.



STABLE AND DURABLE

Machine Body Uses SUS 304 1.5mm stainlesssteel and mechanical control. Durability and stability can be maintained even in high temperature and moisture environment.



HIGH EFFICIENCY

High speed design and strong washing power enhance the washing efficiency and manpower saving.



INTERNATIONAL RECOGNITION

G-TEK Dishwasher complied with the international standard of food safety and hygiene, approved by HACCP which achieved the standard of material used, washable, temperature, time, water pressure and operation, hygiene and safety image enhanced.



INTERNATIONAL MANUFACTORY

The full series of dishwashers are manufactured under rigorous procedures and inspection, from research and development, materials selection, design to quality control.



SIMPLE TO USE

Adopt user friendly operation system. one-button activation and automatic operation are easy for any users to control.

Global-Tek (Singapore) Pte Ltd.

North Spring Bizhub, 5 Yishun Industrial Street 1,
#04-04, Singapore 768161

Tel: +65 6749 7123 / +65 8127 6268 Fax: +65 6481 7123

WWC Global Tek (Malaysia) Sdn.Bhd.

No. 21-C, Jalan Kenari 4, Bandar Puchong
Jaya, 47170 Puchong, Selangor, Malaysia.

Tel: +60 12 925 5388/ +65 9108 9918

PT Global Tek Indo

Office 8, Level 18-A, JL. Jend Sudirman Kav. 52-53 SCBD
Jakarta Selatan 12190, Indonesia.

Tel: +62 81111 66997/ +65 9108 9918