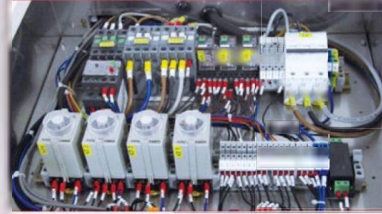
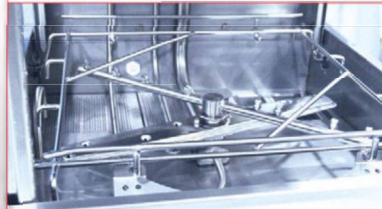


GT-D1M



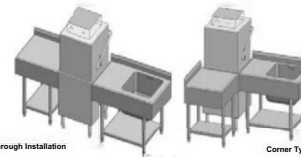
DOOR TYPE DISH WASHER GT-D1M



Characteristics

- Built-in rinse pump ▶ Consistent rinse pressure
- HACCP certified machine ▶ Ensure hygiene standard
- Mechanical circuit control ▶ Minimizes down time & repair cost
- Highly efficient performance ▶ Reduce labor costs
- 1.25 HP powerful washing pressure ▶ Superior washing results
- All stainless steel wash tank components ▶ Durable & reliable

• Straight Through Installation



Corner Type Installation

Technical Data	D1M(TC-RB) (3Phase)	D1M(LE-RB) (1 Phase)
Wash Tank Heater	3 kW	2 kW
Booster Heater	1 x 9 kW	1x 2kW
Power Supply	415V/50Hz/3 Phase	230V/50Hz/1 Phase
Machine Capacity	60 or 45 racks/ hr	50 or 37 racks/ hr
Wash Cycle Time	60 or 90 sec (selectable)	70 or 100 sec (selectable)
Electrical Loading	13kW/ 20A	3.5kW/ 15A (alternative heating)
Wash Tank Capacity	36 Ltr	
Booster Tank Capacity	10 Ltr	
Machine Net Weight	128 kg	
Wash Pump / Rinse Pump	1.25 HP / YES	
Loading Height	420 mm	
Water Consumption	<2.4 ltr/rack	
Rack Size	500 mm x 500 mm	
Dimension	W697 mm x D683 mm x H1620 mm	

