



EQUIPMENT

## VEGETABLE CUTTER PVP

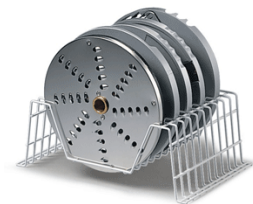


### STANDARD FEATURES

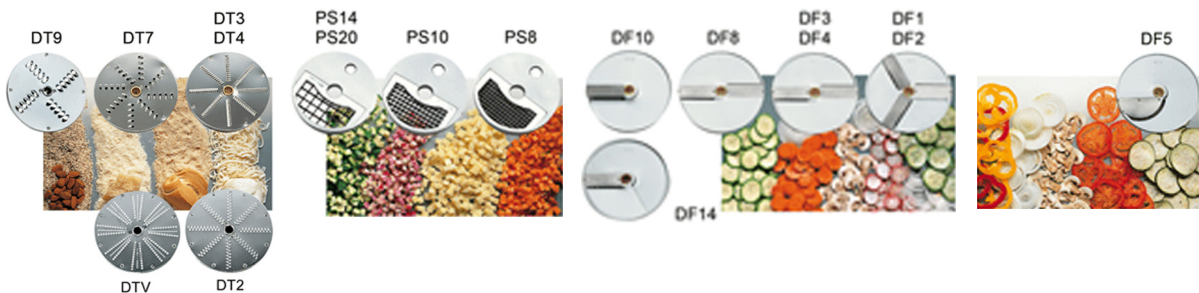
- Very easy to use
- Easy to clean
- The lid is completely removable to change accessories
- High volume production
- Wide selection of discs and grids
- Anodized aluminum food grade construction



Optional Chute  
for Continuous  
Production  
(Accessory)



Optional Disc Holder  
(Accessory)



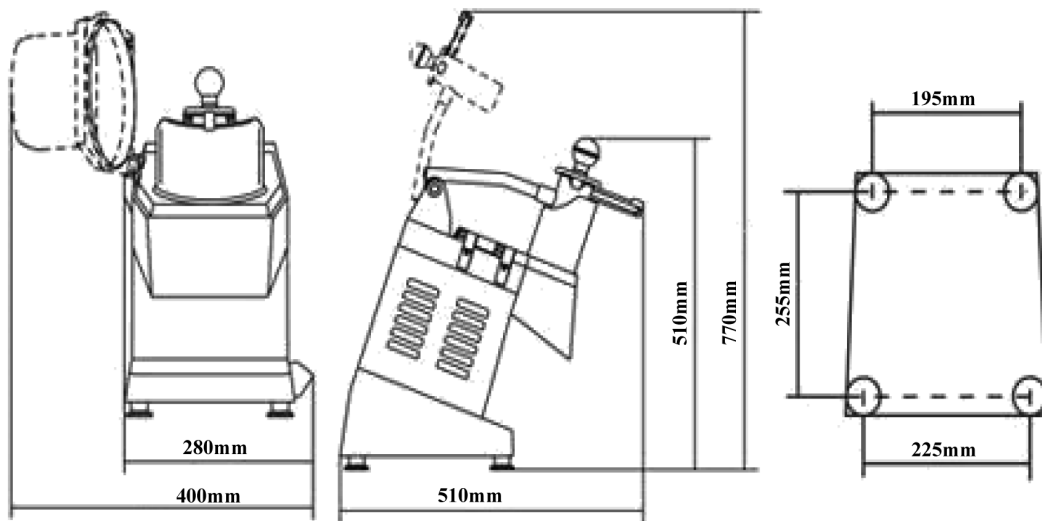
**Wide Selection of discs and grids, suitable for all applications.**

# VEGETABLE CUTTER PVP

## Technical Data

Height	510 mm (20.08")
Overall height	790 mm (31.10")
Width	400 mm (15.75")
Depth	510 mm (20.08")
Motor	2/3 HP /.515 kw
Electric	115/60/1, 230/50/60/1 or 400/50/3
Power	0.51 Kw, .7 HP
Disc speed	300 RPM
Net weight	18.5 kg (40.79 lbs.)
Shipping weight	22 kg (48.5 lbs.)

## Detail & Dimensions



As continued product improvement is a policy of Powerline, specifications are subject to change without notice.



## POWERLINE EQUIPMENT COMPANY

Pulaski Street, Norwalk, CT 06851 USA. Tel: 203-847 2357 Fax: 203-847 6480

[www.powerlineequip.com](http://www.powerlineequip.com)