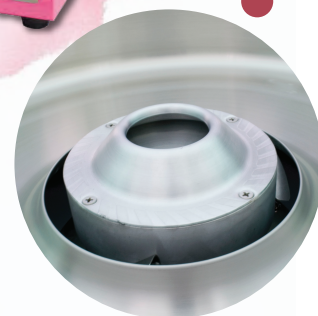


THE BAKER

CANDY COTTON MACHINE

The Baker Candy Cotton Machine which use the sugar as the main material, with some other ingredient, can make various flavour and colourful candy floss. The product will not be the sample white candy floss but the one of different colour, like red, yellow, green, strawberry, peach, watermelon, lichi, mango. It will be not only healthy but also delicious.



Candy Cotton

Model :
CM-520

Power	1080W
Voltage	220V / 50Hz
Yield	1 / 30 Sec
Weight	13 kg
Dimension	570 x 570 x 445 mm
Stock Code	880703027

*** Product's specification subject to change without further notice.
*** Actual product may slightly differ from pictures shown.

ESM493
(20/03/17)