

# With speed control function

## DIM-300NW



### +30% up!

30% increase in production  
compared to the previous  
year's own model

### Smart sensing

Real-time check of coolant  
temperature.  
Maintain optimal performance

### Easy operation

Easy and fast anyone with  
dial button

Afternoon's 6th generation development,  
sold since 2014

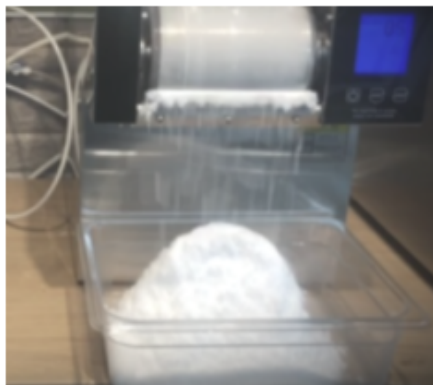
## Afternoon '2021 model release

Maximizing ice making performance and optimizing the functions  
required by users through technological innovation

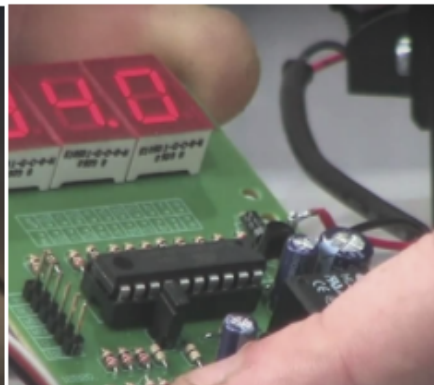


## Comparison of new models and existing products

Afternoon, which used to lead the snowflake ice machine market,  
is once again overcoming the limit.



Ice making performance  
increased by 30%



Automatic  
flow-control system

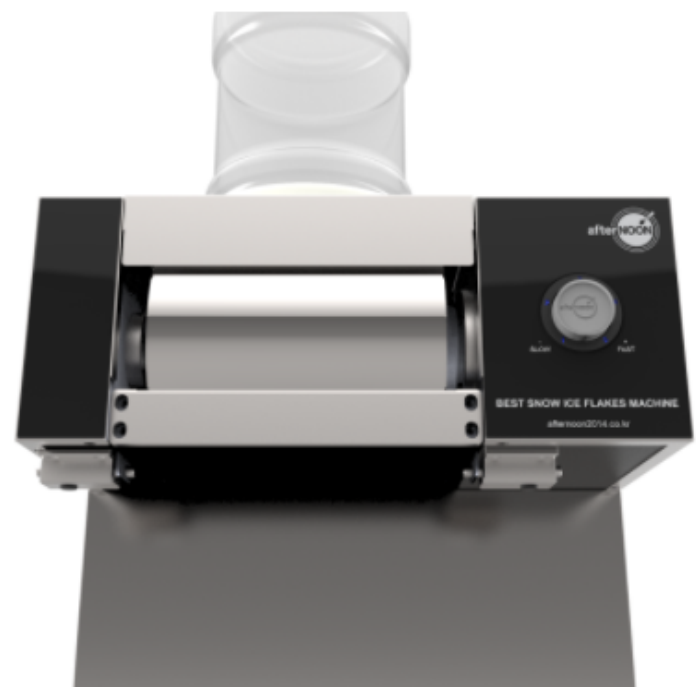
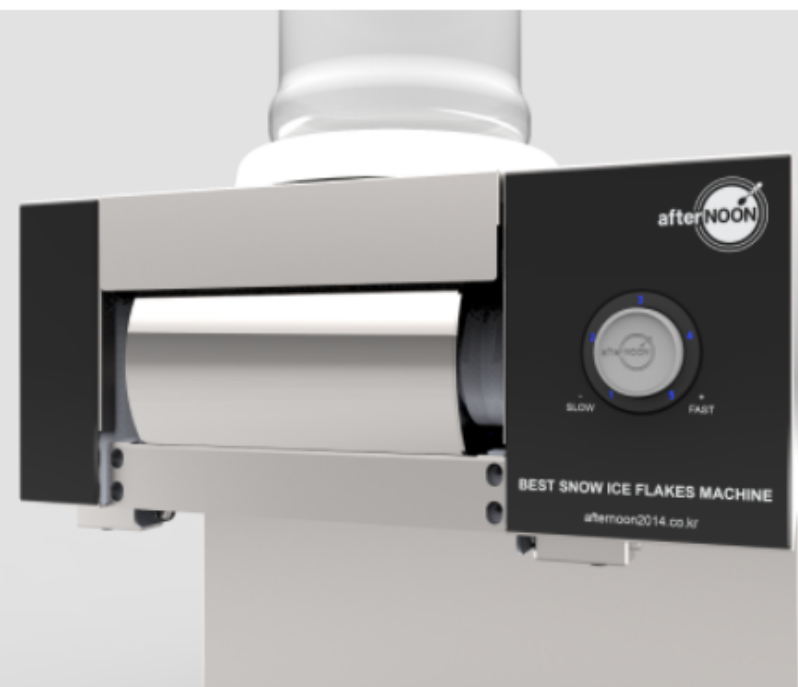


Speed control  
1 to 5 steps

# IMAGE VIEW



MODEL: DIM-300NW



# *Afternoon's unique technology* that has been handed down from 2014 to the present

*"The appearance can be imitated, but the performance cannot be imitated."*



## POINT 01

### Smart sensing

It measures the temperature of the discharged water in real time to control the flow rate and maintain optimal performance.

## POINT 02

### Easy control

Control the drum speed with one dial button, Self-diagnosis function checks itself and displays an error code in case of abnormality.

## POINT 03

### The durability of the proven cooling drum

The durability of the drum, which is a key component, has been verified with the experience of selling 13,000 units in Korea and overseas.

## POINT 04

### Easy and fast productivity

Afternoon, you can freely adjust the drum speed from 1 to 5 steps.

## POINT 05

### The only stainless steel full metal body in its class

The area where the beverage touches is made of food grade stainless steel to minimize contamination.



# Afternoon's **originality** from **2014** to the present

Brand 'Afternoon' has been leading with and leading the snow dessert market

## 2013



### **Korean dessert appeared**

The appearance and rapid spread of milk snowflake shaved ice instead of red bean shaved ice

## 2014



### **CIM-354WF Release**

Launched the first mass-produced product in Korea thanks to the popularity of milk snowflake bingsu

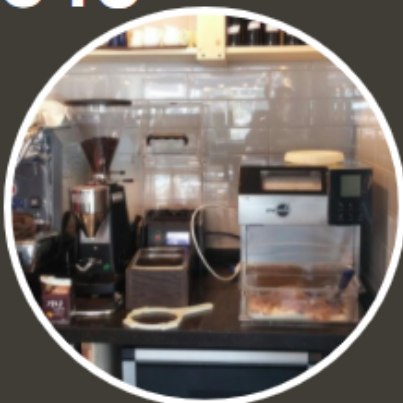
## 2015



### **Table type CIM-255WT**

Launched the first table-type installation product CIM-255WT in Korea

## 2016



### **CIM-156WT Release**

Launched CIM-156WT with improved performance and reduced size

## 2017



### **7 series (3 types) released**

Launched 3 new types including the smallest CIM-117WT in Korea

## 2019



### **9 series (6 types) released**

Newly launched 6 types of products including smart sensing and air-cooled



A new name for snow dessert.  
**Milk snowflake shaved ice**



Low calorie,  
healthier



Everyone has  
their own menu



Various age groups  
enjoy it together.

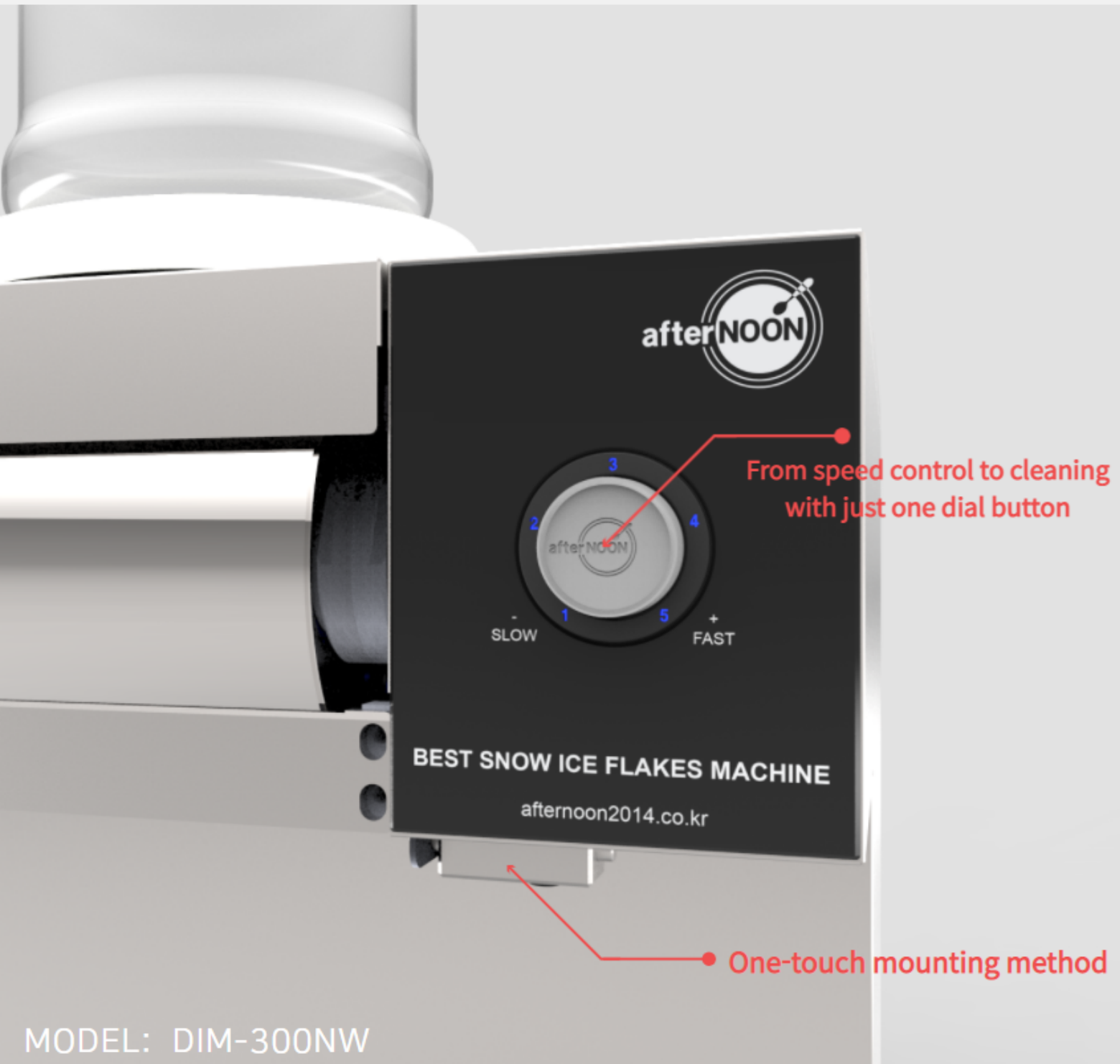
**Presenting new possibilities** with a variety of menus!



Snowflakes pouring from a cooling drum

# Ice Snow flake Machine

## DIM-300NW



MODEL: DIM-300NW





After plugging the power cord into an outlet, press the center of the dial button once.



During product operation, press the button in the center of the dial once more.



While the operation is stopped, press and hold the dial button for 2 seconds.  
(As the cleaning mode starts, the LED in the number part flashes in sequence.)



Adjust to the desired speed while turning the dial.

#### Basic Components



Manual



Ball valve 1/4"



Water connection adapter



Mesh filter



Tubing ship  
3-in fitting



Support cap



Dedicated container  
Container cap



Spare packing



Container cap  
separation wrench



spatula



Bowl



Basic Components



Manual



Ball valve 1/4"



Water connection adapter



Mesh filter



Tubing ship 3-in fitting



Support cap



Dedicated container  
Container cap



Spare packing



Container cap separation wrench

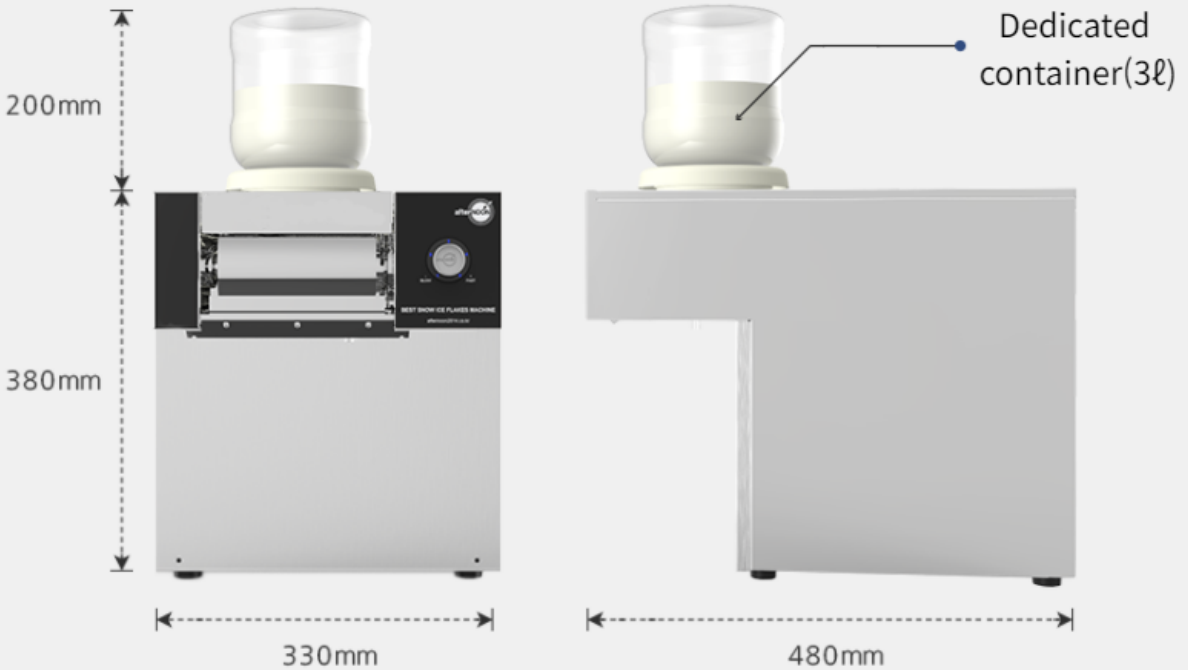


spatula



Bowl

# DIM-300NW



out put		250kg/1day
Drum width		13cm
Power Consumption		1300W _AC220V 50/60Hz
Exterior material		SUS201,304,420
Product weight		37kg
Product size		33 x 48 x 38 _W x D x H, cm
Safety certification No.		[KC] SH07016-15002B