

Modular Cooking - Meritus

Gas - Noodle Cooker

NGN 16 AL (ME)



Due to continuous technical development, the image shown may not represent the latest design of the unit.

DESCRIPTION

Modular gas noodle cooker with 750 mm depth and 16 kW tubular burner. Equipped with programmable auto-lifting features. Equipped with swing door.

Salt-resistant stainless steel tank with a volume of 27 liters and cold water supply with a faucet for tank filling, easy operable from the front panel. Designed for continuous and high-speed cooking of noodles, the NGN 16 is the perfect choice for any Asian restaurants.

Made of AISI 304 with 1.5 mm top thickness, temperature controlled, noodle tank is welded.

OTHER AVAILABLE MODELS

- NGN 16 (ME)

MAIN FEATURES

- Powered with 16 kW chrome-plated steel fin burner.
- Capacity up to 27 liters.
- Usable for six noodle baskets with auto-lifting features.
- Six individual timer, one for each baskets. Resettable through two button simultaneous push.
- Tank outer surface is coated with special black paint to improve its thermal efficiency.
- Manual water filling system with integrated knob on the front panel.
- Piezzo ignition system with rubber cover.
- Equipped with flame failure device.
- Thermal-cut off when overheated.

CONSTRUCTION

- External construction entirely with AISI 304.
- Top panel with 1.5 mm thickness. Orbital surface finishing: resistant toward scratches.
- Front panel is constructed of 0.8 mm AISI 304 with satin surface finish.
- Side panel is constructed of 0.8 mm AISI 304 with satin surface finish.
- Adjustable +/- 25 mm AISI leg.
- Nayati connection system between Meritus products on the front panels, cabinets, and splashbacks.
- Cabinet executed with H2 radius.
- Deep drawn front panel to minimize liquid penetration to the internal part.
- Gasket protection behind the knobs to prevent water to seeping in, prolonging main heating regulation parts.

INCLUDED ACCESSORIES

- G20 Conversion Kit
- Noodle basket (6 pcs.).
- Swing door.

OPTIONAL ACCESSORIES

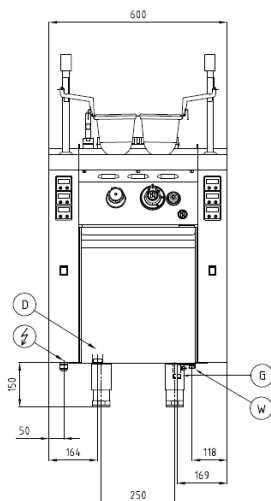
- Extra noodle baskets.
- Joint clip ME.

PT. NAYATI INDONESIA

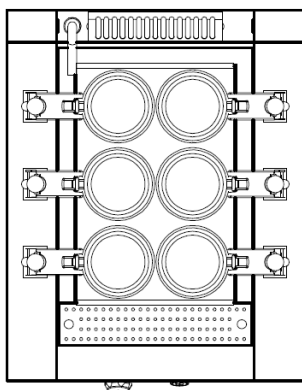
www.nayati.com

Nayati reserves the right to make product alterations and or price adjustments at any time and can not be held responsible for any printing errors or omissions.

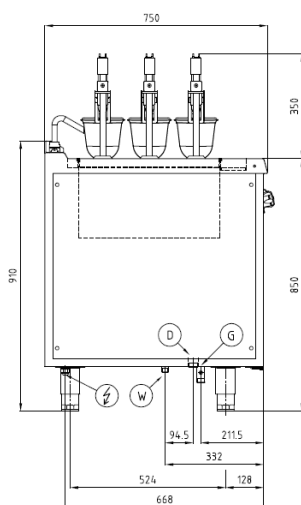
FRONT



TOP



SIDE



*Overall dimension in mm

TECHNICAL DATA

External Dimensions

Width	: 600 mm
Depth	: 750 mm
Height	: 850/900 mm

Cooking Surface

Cooking zones	: 27 liters, 320 x 475 mm
---------------	---------------------------

Gas Power Rating

Heat input total	: LPG/LNG 16 kW
No. of burners	: 1
Control type	: High - low power control
Gas type options	: LPG G30, G31 LNG G20, G25

Connections

Gas	: DN 20 (3/4")
Water	: DN 15 (1/2")
Drain	: DN 25 (1")

Heat & Steam Emissions

Direct heat emission	: 3.12 kW
Latent heat emission	: 3.52 kW
Steam emission	: 5.17 kg/h

PACKAGING DATA

Width	: 630 mm
Depth	: 780 mm
Height	: 1020 mm
Volume	: 0.50 m³

WEIGHT

Net Weight	: 96 kg
Gross Weight	: 112 kg

PT. NAYATI INDONESIA

www.nayati.com

Nayati reserves the right to make product alterations and or price adjustments at any time and can not be held responsible for any printing errors or omissions.

11/09/2020